

Middle Tennessee Vocal Association



CHORAL SIGHTREADING PACKET

2011 Choral Adjudication Festival

Based on MTVA Sightreading Standards

DO NOT OPEN THIS PACKET UNTIL THE SIGHTREADING CLINICIAN INSTRUCTS YOU TO DO SO.

Table of Contents

MTVA Sightreading Guidelines.....	2
Rhythmic Exercises.....	3
Melodic Exercises : Treble	4
Melodic Exercises : Tenor	5
Melodic Exercises: Bass.....	6
Multi-Part	
SA	6
SSA.....	7
TB.....	8-9
TTB.....	10
TTBB	11
Mixed	
SAB	12
SATB	13-14

Choral Festival Sightreading Guidelines

2011


The following guidelines have been set for the sightreading portion of the MTVA Choral Festival. Based on the National Standards of Music, the rubric below is meant to set reasonable and age-appropriate sightreading goals for the choral ensembles in Middle Tennessee. Music written for the sightreading packet will be based on these guidelines.

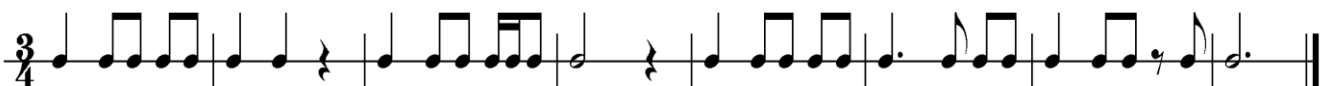
High School Choirs


- Classified as a choir consisting of Grades 9-12 (9th-Grade Choirs can choose Junior High or High School Classification).
- Each section in each choir will be required to sing at least one set of rhythms and one unison melody.
- The entire choir will sing one multi-part piece.
- Before each Rhythmic or Melodic example, the adjudicator will allow at least 15 seconds of reading time, during which there is to be no vocalization from the director or students.
- Before each part-singing example, the adjudicator will give at least 20 seconds of reading time, during with there is to be no vocalization from the director or students.
- Each Rhythmic and Melodic example shall not exceed 8 measures in length.
- Each multi-part piece shall not exceed 20 measures.
- The director chooses the voicing of the multi-part piece; however, it is expected that it reflect the majority voicings of pieces sung during the performance portion of the Festival.
- Each choir can perform the examples using whichever system they employ during class (fixed “do”, numbers, counting, clapping, etc.)


<u>Rhythm</u>	<u>Unison Melody</u>	<u>Multi-part Singing</u>
<ul style="list-style-type: none"> • Time Signatures can include 2/4, 3/4, 4/4, 6/8, 9/8, 12/8. • Rhythms can include combinations of whole, half, quarter, eighth, and sixteenth notes and rests. • Rhythms can include dots, ties, syncopation, and triplets. • MM = 60-112 	<ul style="list-style-type: none"> • Same Rhythmic Requirements. • Time Signatures shall include 2/4, 3/4, 4/4, or 6/8 • Treble and Bass Clef reading, not necessarily specific to voicing. • Shall include stepwise, leaps within the tonic, dominant, or Subdominant triads. • Accidentals can be used Leaps shall not exceed an octave. • If example does not start on the Tonic, the clinician shall explain on which step it begins. • Major and minor modes. 	<ul style="list-style-type: none"> • Same Rhythm and Melodic Requirements. • If one part in the example does not start on the Tonic, the clinician may or may not explain. • The clinician will play the starting pitch of each part prior to beginning the piece. • Major mode only.


High School Rhythmic Exercises


1. $\frac{2}{4}$ 


2. $\frac{3}{4}$ 


3. C 


4. $\frac{4}{4}$ 

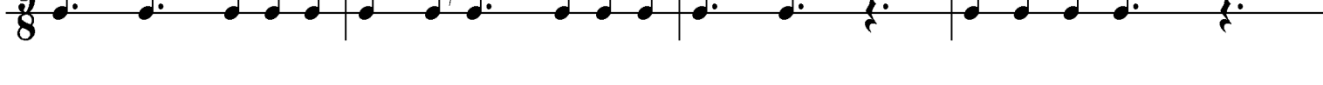
5. $\frac{3}{4}$ 


6. $\frac{4}{4}$ 

7. $\frac{4}{4}$ 

8. $\frac{6}{8}$ 

9. $\frac{9}{8}$ 

10. $\frac{12}{8}$ 

5 

High School Melodic Exercises

1.

Musical notation for exercise 1, consisting of two staves in G major and common time. The first staff contains 4 measures of music. The second staff begins with a measure rest marked '5' and continues with 4 measures of music.

2.

Musical notation for exercise 2, consisting of two staves in D major and 4/4 time. The first staff contains 4 measures of music. The second staff contains 4 measures of music.

3.

Musical notation for exercise 3, consisting of one staff in G major and common time. The staff contains 8 measures of music.

4.

Musical notation for exercise 4, consisting of two staves in D major and 6/8 time. The first staff contains 4 measures of music. The second staff contains 4 measures of music.

5.

Musical notation for exercise 5, consisting of one staff in B-flat major and 4/4 time. The staff contains 8 measures of music.

High School Melodic Exercises (Tenor)

6.

A.

Musical staff A for exercise 6, starting with a treble clef, key signature of three flats (Bb, Eb, Ab), and 3/4 time signature. An '8' is written below the staff. The melody consists of a series of quarter notes: G4, A4, Bb4, C5, D5, Eb5, F5, G5, F5, E5, D5, C5, Bb4, A4, G4.

B.

Musical staff B for exercise 6, starting with a bass clef, key signature of three flats (Bb, Eb, Ab), and 3/4 time signature. The melody consists of a series of quarter notes: G3, A3, Bb3, C4, D4, Eb4, F4, G4, A4, Bb4, C5, D5, Eb5, F5, G5, F5, E5, D5, C5, Bb4, A4, G4.

C.

Musical staff C for exercise 6, starting with a bass clef, key signature of three flats (Bb, Eb, Ab), and 3/4 time signature. The melody consists of a series of quarter notes: G3, A3, Bb3, C4, D4, Eb4, F4, G4, A4, Bb4, C5, D5, Eb5, F5, G5, F5, E5, D5, C5, Bb4, A4, G4.

7. A.

Musical staff A for exercise 7, starting with a treble clef, key signature of two sharps (F#, C#), and 4/4 time signature. The melody consists of quarter notes: G4, A4, B4, C5, D5, C5, B4, A4, G4. This is followed by an 8-measure rest.

Musical staff A for exercise 7 (continued), starting with a treble clef, key signature of two sharps (F#, C#), and 4/4 time signature. A '5' is written above the staff. The melody consists of quarter notes: G4, A4, B4, C5, D5, C5, B4, A4, G4. This is followed by an 8-measure rest.

B.

Musical staff B for exercise 7, starting with a bass clef, key signature of two sharps (F#, C#), and 4/4 time signature. The melody consists of quarter notes: G3, A3, B3, C4, D4, C4, B3, A3, G3. This is followed by an 8-measure rest.

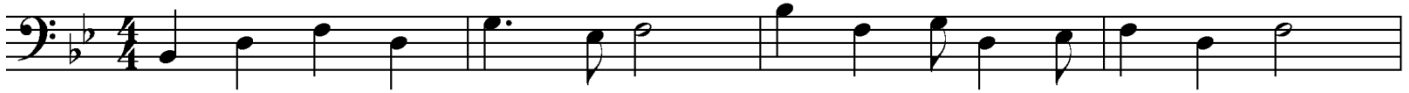
Musical staff B for exercise 7 (continued), starting with a bass clef, key signature of two sharps (F#, C#), and 4/4 time signature. A '5' is written above the staff. The melody consists of quarter notes: G3, A3, B3, C4, D4, C4, B3, A3, G3. This is followed by an 8-measure rest.

High School Melodic Exercises (BASS)

8.

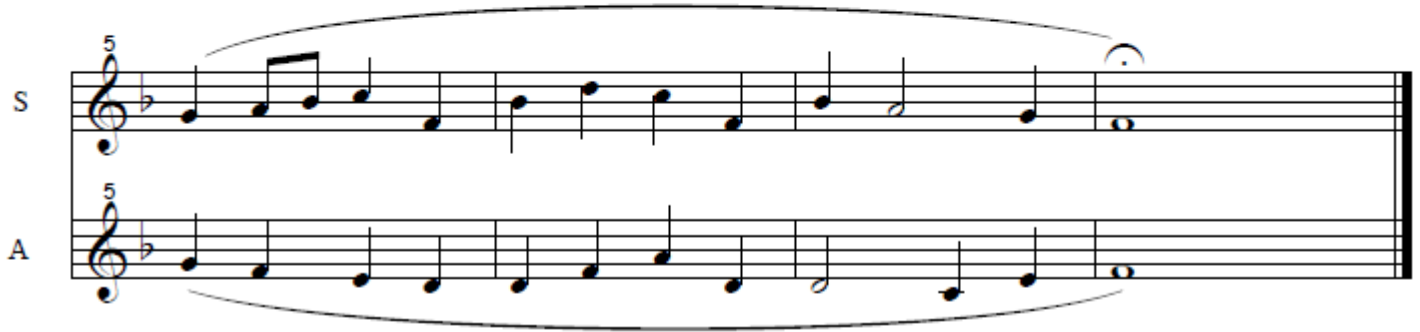


9.



High School Multi-Part Exercises

Two-part Treble (SA)



High School Multi-Part Exercises

Three-part Treble (SSA)

Musical notation for the first system, measures 1-4. The system includes three staves: Sop I, Sop II, and Alto. The key signature is two sharps (F# and C#) and the time signature is common time (C). The music begins with a first-measure rest (1) in each part.

Musical notation for the second system, measures 5-8. The system includes three staves: S I, S II, and A. The music begins with a fifth-measure rest (5) in each part.

Musical notation for the third system, measures 9-12. The system includes three staves: S I, S II, and A. The music begins with a ninth-measure rest (9) in each part. The system concludes with a double bar line.

High School Multi-Part Exercises

Two-part Male (TB)

Tenor

Bass

T

B

⊙ ⊙ ⊙

Tenor

Bass

T

B

High School Multi-Part Exercises

Two-part Male (TB)

Musical notation for the first system of a two-part male exercise. The top staff is labeled 'T' (Tenor) and the bottom staff is labeled 'B' (Bass). Both staves are in bass clef. The key signature has three sharps (F#, C#, G#) and the time signature is 3/4. The music consists of a series of notes and rests for both parts.

Musical notation for the second system of a two-part male exercise. The top staff is labeled 'T' and the bottom staff is labeled 'B'. Both staves are in bass clef. The key signature has three sharps and the time signature is 3/4. A measure rest '5' is indicated at the beginning of both staves. The music continues with notes and rests.

⊙ ⊙ ⊙

Musical notation for the third system of a two-part male exercise. The top staff is labeled 'T' and the bottom staff is labeled 'B'. The top staff is in treble clef and the bottom staff is in bass clef. The key signature has three sharps and the time signature is 3/4. An octave sign '8' is placed below the top staff. The music consists of notes and rests for both parts.

Musical notation for the fourth system of a two-part male exercise. The top staff is labeled 'T' and the bottom staff is labeled 'B'. The top staff is in treble clef and the bottom staff is in bass clef. The key signature has three sharps and the time signature is 3/4. Octave signs '8' and '5' are placed below the top and bottom staves, respectively. The music consists of notes and rests for both parts.

Three-part Male (TTB – Men singing the middle part can sing either the 2nd or 3rd line)

Musical score for Tenor, Baritone, and Bass parts. The score is in 3/4 time and D major. The Tenor part is on a treble clef staff, the Baritone part is on a bass clef staff, and the Bass part is on a bass clef staff. The Tenor part begins with a fermata on the first note. The Baritone and Bass parts begin with a half note. The Tenor part has a fermata on the final note.

Musical score for Tenor, Baritone, and Bass parts. The score is in 3/4 time and D major. The Tenor part is on a treble clef staff, the Baritone part is on a bass clef staff, and the Bass part is on a bass clef staff. The Tenor part begins with a fermata on the first note. The Baritone and Bass parts begin with a half note. The Tenor part has a fermata on the final note. Fingerings are indicated by the number 5 above the first notes of each part.

High School Multi-Part Exercises

Four-part Male (TTBB)

Musical score for Tenor 1, Tenor 2, Baritone, and Bass, measures 1-4. The score is in 4/4 time with a key signature of two flats (B-flat and E-flat). The Tenor 1 part starts with a half note G4, followed by quarter notes A4, B4, and C5, then a half note D5. The Tenor 2 part starts with a half note G4, followed by quarter notes A4, B4, and C5, then a half note D5. The Baritone part starts with a half note G3, followed by quarter notes A3, B3, and C4, then a half note D4. The Bass part starts with a half note G2, followed by quarter notes A2, B2, and C3, then a half note D3.

Musical score for Tenor 1, Tenor 2, Baritone, and Bass, measures 5-8. The score is in 4/4 time with a key signature of two flats (B-flat and E-flat). The Tenor 1 part starts with a half note G4, followed by quarter notes A4, B4, and C5, then a half note D5. The Tenor 2 part starts with a half note G4, followed by quarter notes A4, B4, and C5, then a half note D5. The Baritone part starts with a half note G3, followed by quarter notes A3, B3, and C4, then a half note D4. The Bass part starts with a half note G2, followed by quarter notes A2, B2, and C3, then a half note D3.

Musical score for Tenor 1, Tenor 2, Baritone, and Bass, measures 9-12. The score is in 4/4 time with a key signature of two flats (B-flat and E-flat). The Tenor 1 part starts with a half note G4, followed by quarter notes A4, B4, and C5, then a half note D5. The Tenor 2 part starts with a half note G4, followed by quarter notes A4, B4, and C5, then a half note D5. The Baritone part starts with a half note G3, followed by quarter notes A3, B3, and C4, then a half note D4. The Bass part starts with a half note G2, followed by quarter notes A2, B2, and C3, then a half note D3.

High School Multi-Part Exercises

Three-part Mixed (SAB)

Musical notation for Soprano (Sop), Alto, and Baritone (Bar) parts, measures 1-4. The key signature is one sharp (F#) and the time signature is common time (C). The Soprano part starts on G4, the Alto on E4, and the Baritone on C3. Each part has a slur over the first four notes and another slur over the last four notes.

Musical notation for Soprano (S), Alto (A), and Baritone (B) parts, measures 5-8. The key signature is one sharp (F#) and the time signature is common time (C). The Soprano part starts on G4, the Alto on E4, and the Baritone on C3. Each part has a slur over the first four notes and another slur over the last four notes. Commas are placed above the notes in measures 6 and 8.

Musical notation for Soprano (S), Alto (A), and Baritone (B) parts, measures 9-12. The key signature is one sharp (F#) and the time signature is common time (C). The Soprano part starts on G4, the Alto on E4, and the Baritone on C3. Each part has a slur over the first four notes and another slur over the last four notes. Commas are placed above the notes in measures 10 and 12. The notation ends with a double bar line.

High School Multi-Part Exercises

Four-Part Mixed (SATB)

Moderato (♩ = c. 108)

Musical score for Soprano, Alto, Tenor, and Bass, measures 1-5. The score is in 4/4 time with a key signature of one flat (B-flat). The tempo is Moderato (♩ = c. 108). The Soprano part features a melodic line with a long note in measure 1. The Alto, Tenor, and Bass parts provide harmonic support with rhythmic patterns.

Musical score for Soprano, Alto, Tenor, and Bass, measures 6-10. The score continues with the same instrumentation and key signature. The Soprano part has a melodic line with a sharp sign in measure 7. The Alto, Tenor, and Bass parts continue their harmonic support.

Musical score for Soprano, Alto, Tenor, and Bass, measures 11-15. The score concludes with a double bar line and repeat dots. The Soprano part has a sharp sign in measure 12. The Alto, Tenor, and Bass parts conclude their harmonic support.

High School Multi-Part Exercises

Four-Part Mixed (SATB)

Musical score for Soprano, Alto, Tenor, and Bass parts. The score is in 3/4 time and G major (one sharp). The Soprano part begins with a treble clef and a key signature of one sharp. The Alto part begins with a treble clef and a key signature of one sharp. The Tenor part begins with a bass clef and a key signature of one sharp. The Bass part begins with a bass clef and a key signature of one sharp. The Soprano part features a melodic line with eighth and quarter notes. The Alto part features a melodic line with quarter and eighth notes, including a slur. The Tenor part features a melodic line with quarter and eighth notes. The Bass part features a melodic line with quarter and eighth notes.

Musical score for Soprano, Alto, Tenor, and Bass parts, measures 5-8. The Soprano part begins with a treble clef and a key signature of one sharp, marked with a '5' above the staff. The Alto part begins with a treble clef and a key signature of one sharp, marked with a '5' above the staff. The Tenor part begins with a bass clef and a key signature of one sharp, marked with a '5' above the staff. The Bass part begins with a bass clef and a key signature of one sharp, marked with a '5' above the staff. The Soprano part features a melodic line with quarter and eighth notes. The Alto part features a melodic line with quarter and eighth notes. The Tenor part features a melodic line with quarter and eighth notes. The Bass part features a melodic line with quarter and eighth notes.